

1 2 3 4 5 6 7 8 9 10 11

A

B

C

D

E

F

G

H

J

A

B

C

D

E

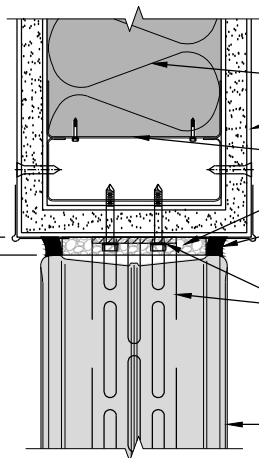
F

G

H

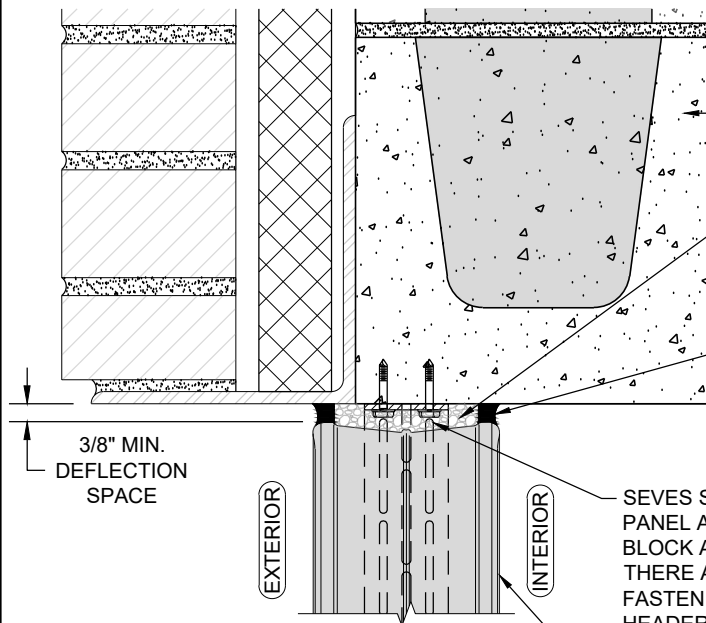
J

3/8" MIN.
DEFLECTION SPACE



INSULATION
GYPSUM BOARD
METAL OR WOOD STUD FRAMING
SEVES EXPANSION STRIP
SEVES SILICONE SEALANT (TYP)
SEVES STAINLESS STEEL
PANEL ANCHOR W/ TWO
S.S. FASTENERS
SEVES GLASS BLOCK,
PREMIERE™ SERIES

HEAD - 45 MIN FIRE RATED GLASS BLOCK IN METAL OR WOOD STUD WALL



CMU OR CONCRETE
SEVES EXPANSION STRIP
SEVES SILICONE SEALANT TYP.

3/8" MIN.
DEFLECTION SPACE

SEVES STAINLESS STEEL VERTICAL
PANEL ANCHOR, AFTER FIRST
BLOCK AND EVERY OTHER BLOCK
THERE AFTER. MECHANICALLY
FASTENED TO STRUCTURAL
HEADER, FASTENERS BY OTHERS
SEVES GLASS BLOCK,
PREMIERE™ SERIES

HEAD - 45 MIN FIRE RATED GLASS BLOCK IN CMU/CONCRETE WALL

CONFIDENTIAL – PROPRIETARY THESE DRAWINGS WERE CREATED BY AND REMAIN THE PROPERTY OF SEVES GLASS BLOCK INC. UNAUTHORIZED DISCLOSURE, DISTRIBUTION OR COPYING OF THESE DRAWINGS IS STRICTLY PROHIBITED. THE FOLLOWING DETAILS ILLUSTRATE DESIGN INTENT; VARIATIONS MAYBE ACCEPTABLE. PLEASE CONTACT SEVES GLASS BLOCK TECHNICAL DEPARTMENT FOR FURTHER CONSULTATION.



PROJECT FIRE RATED CONSTRUCTION DETAIL			
TITLE HEAD - 45 MIN FIRE RATED GLASS BLOCK IN METAL-WOOD STUD OR CONCRETE WALL			
SCALE 3"=1'-0"	DWG. NO. FR-111	REV 0	
BY MAI	DATE 10/10/2022	SHEET 1	

1 2 3 4 5 6 7 8 9 10 11